

# BUILDING ON WATER

The Ultimate Resource Guide



**Bellingham**  
MARINE®

BUILDING  
ON WATER  
The Ultimate Resource Guide



A wide-angle photograph of a large marina at dusk. Numerous sailboats of various sizes are docked in rows, their masts creating a dense forest of vertical lines against the twilight sky. The water is calm, reflecting the lights from the boats and the distant city. In the background, a city skyline is visible, with several tall buildings illuminated by warm lights. The sky transitions from a deep blue at the top to a soft purple and pink near the horizon.

## DEAR VALUED CUSTOMER

Bellingham Marine knows that every marina starts with a vision. We hope this book helps you consider the possibilities. Together, through planning and design, we can maximize your opportunities for growth and bring the most long term value to your investment. We look forward to being a trusted resource to help you kick start your next project.





## OPTIMIZED

Comprehensive design strategies consider every component to achieve greater overall value.

## THOUGHTFUL

Every detail is considered to maximize functionality, investment return and user experience.

## TIMELESS

Design that stands the test of time. It reflects the current needs and anticipates future demands.

## SUSTAINABLE

Continually develop practices that support long term financial health and protect the surrounding environment.





**8**  
**WATERSIDE INFRASTRUCTURE**

Floating Dock Systems  
Wave Attenuators  
Floating Platforms  
Paddle Boat Launch Docks  
Fixed Pier Structures

**28**  
**LANDSIDE INFRASTRUCTURE**

Drystacks  
Railings, Gates & Gangways

**34**  
**DESIGN AND CONSTRUCTION**

The Design/Build Approach

**40**  
**WATERFRONT RESORTS  
AND HOTELS**

Blue Haven Resort and Marina  
Bimini Bay Marina  
Marina CostaBaja  
Ko Olina Resort and Marina  
Yas Marina  
Bridge Pointe Hotel and Marina  
Wyndham Harbour

**60**  
**URBAN MARINA PROPERTIES**

Alamitos Bay Marina  
The Yards  
Fort Pierce City Marina  
Sacramento City Marina  
The Wharf  
Marina at Keppel Cove

**URBAN MARINA  
PROPERTIES CONTINUED**

Stockton Marina  
Marina at Marina City Club  
Westpoint Harbor  
Rose Bay & Point Piper  
Cap Sante Boat Haven  
Marina del Rey Marina

**92**  
**SUPERYACHT FACILITIES**

Yacht Club Costa Smeralda  
Marina di Loano  
Albany Marina  
Rybovich  
Wards Cove on Lake Union  
Port Forum  
Bahia Mar Yachting Center

**112**  
**PRIVATE CLUBS  
AND DOCKOMINIUMS**

Wrightsville Beach Marina  
Royal Melbourne Yacht Squadron  
Ocean Reef Club Marina  
Marina at Keppel Bay  
Royal Sydney Yacht Squadron

**126**  
**BOATYARD FACILITIES**

Port Covington Maritime Center  
The Boatyard at Marina del Rey  
The Boatyard at Channel Islands

**134**  
**FISHING HARBORS**

Whittier Small Boat Harbor  
St. Paul Small Boat Harbor  
Crescent City Harbor

**144**  
**COMMERCIAL TERMINALS**

Hornblower Cruises  
USS Arizona Memorial  
Beach Haven  
Flagship Cruises

**154**  
**SPECIAL USE**

Miami Int'l Boat Show Marina  
Coeur d'Alene Floating Green  
31 St. Street Marina, Floating Pool  
Pelton Round Butte Dam  
Port of Long Beach, Pier D

**166**  
**DRYSTACK FACILITIES**

Carrabelle Boat Club  
Tarpon Club Marina  
Bluepoints Marina

**174**  
**ABOUT BELLINGHAM MARINE**

History  
Commitment to Sustainability  
Office Locations

**180**  
**AWARDS**





## WATERSIDE INFRASTRUCTURE

Overwater structures are either fixed or floating. Fixed structures are built on pilings. These structures are static or “fixed” in place.

Floating structures are designed to move up and down as the water level rises and falls. Advancements in engineering and a growing understanding of the benefits associated with floating structures has led to their increased popularity over the last several decades.





60 ft. single piece concrete finger.

## FLOATING DOCK SYSTEMS

There are numerous types of floating dock systems available in today's market - concrete, aluminum, steel and wood are among the most popular.

Buyers must beware. Not all "like" dock systems are created equal. There is great variability in quality, performance, engineering, and design within each type.

The approach used in the design, how the system is engineered, and the quality of the materials are the greatest determinants of a dock system's overall performance.

It is also important to note, not all types of systems are appropriate for all environments. Sites exposed to extreme weather and higher wave conditions benefit from a heavier weight dock system.



6 in. freeboard timber dock for paddle craft



Covered Unifloat concrete docks





Unifloat Concrete Dock System

## Concrete Floating Docks

There are two classes of concrete floating docks. Waler connected and bolted.

The names refer to the method used for connecting the individual modules together. Both have high strength, durability, stability and load capacity ratings. General life span of a properly designed and maintained concrete dock is 50+ years.

Of the two types of concrete docks, the waler system (also known as Unifloat) offers the best value. It ranks high in performance and user experience and is the more economical option of the two. There is a reason the Unifloat system is the most popular dock system worldwide. The modular design of the waler connection system allows for virtually any size or configuration. Individual modules can be replaced or reconfigured with ease.

The bolted concrete dock system is equally strong in performance but is often the more expensive of the two to produce. Individual concrete modules are often larger than those found on a waler connected dock. While no dock is maintenance free, many regard the bolted system as a lower maintenance option.

Bellingham Marine's bolted concrete dock, referred to as the Unibolt, is unique within the industry. A three-part bolt design eliminates any possibility of metal fatigue, which is common in other bolted systems. Another distinguishing feature of the Unibolt is the ability to change connection bolts without separating modules or removing walkway sections from their piles. This is an important feature should a damaged module or connection bolt ever need to be replaced.





*Southern yellow pine decking, timber frame*

## Timber Frame Docks

A mid-weight system, timber docks are a sound choice for cost conscious owners. The average life-span of a properly designed wood dock is 35+ years. This type of system is best suited for well-protected basins (1 ft. wave or less) and for the moorage of small to mid-sized boats (boats under 80 ft.).

Bellingham's timber dock system is an engineered product that is unique within the timber dock industry. The system features a structural waler system with steel reinforced timber connections. The dock's strong structural core guarantees high load capacity and strong performance ratings.



*Ipe hardwood decking, timber frame.*





*The Unideck Aluminum TR framed dock system*

## Aluminum Docks

The aluminum dock is a relative new comer to the floating dock market. The traditional aluminum dock system is classified as lightweight and has moderate strength, stability and load capacity ratings.

Although aluminum docks can be used in coastal environments, constraints of the all-aluminum frame limit use in regions with high salinity or in locations with rough wave environments.

An alternative to the all-aluminum dock is Bellingham's Unideck Aluminum TR. Developed out of a desire to improve upon the traditional all-aluminum dock, Unideck Aluminum TR is the first aluminum style dock that is not susceptible to fatigue, enjoys a long service life and feels extremely solid underfoot.

The Unideck Aluminum TR's high performance, low cost features are attributed to the dock's timber-reinforced frame. An aluminum face plate with channels for cleats, fendering and pile hoops gives the dock great functionality and modern style.



*Traditional aluminum dock, lightweight frame*





*St. Augustine's wave attenuator during Hurricane Matthew*

## WAVE ATTENUATORS

A properly designed wave attenuator will provide a number of benefits. Protecting the marina and creating tranquil waters inside the marina is an attenuator's primary job. However, it can create additional revenue streams and provide ecological benefits as well.

A wave attenuator reflects and attenuates wave energy. Energy that strikes the side of the float is reflected. When waves are small, attenuators perform like a fixed wall and stop virtually all wave energy.

As wave energy increases, a portion passes under the attenuator. In most conditions, even on a windy day, the attenuator will dampen the wave and leave the waters in the marina still.

In addition to providing protection, a wave attenuator may be used for transient or long-term moorage. Boats can side-tie along the dock or fingers can be mounted to the back providing additional full-finger slips. An attenuator can also serve as a fuel dock or support other uses.

Floating concrete wave attenuators have important environmental advantages. They attract undersea vegetation and filter feeders that clean the water and attract fish. Unlike a fixed breakwater, they allow circulation underneath, keeping the harbor oxygenated and the ecosystem unharmed.



*Wave attenuator, St. Augustine City Marina*





Marina office and public outdoor space, Salpare Bay Marina

## FLOATING PLATFORMS

Utilization of floating platforms is a growing trend among recreational boating facilities and other waterfront businesses. It's easy to see why. Their functionality is widespread, and they are often a revenue generator.

Bellingham Marine's match-cast, post-tensioned approach to platform construction results in platforms with exceptionally high marks in performance, stability and lifespan.

Common applications include oversized, open dock areas, portable platforms, floating buildings and ferry landings.



3,360 sq. ft. open, sloped platform, Shilshole Bay Marina





*Portable event float, Cap Sante Boat Haven*

## FLOATING PLATFORMS

Oversized, open dock areas can be used as gathering spaces or for the storage of equipment. These undesignated open areas within the marina are great for hosting educational activities, private parties or community events.

Portable platforms can be moved around the marina, tied-up in an open berth, and connected to power. Frequently rented out as overwater event space, a portable platform is an effective, low-cost way to broaden a marina's service offerings.

Floating buildings are another application of floating platforms. There are a number of reasons for placing a building on the water. Lack of upland property, convenience, and ambience are the most common.

Buildings require rigid foundations. Bellingham Marine's match-cast design ensures the platform performs as a single unit. With a solid foundation, you can use traditional methods to build the structure on top of the platform without worry of long-term performance of the building.

Landings for passenger ferries, dinner cruises and larger charter vessels are another common application for floating platforms. The high load capacity, heavy-duty nature of the match-cast concrete floating platform makes Bellingham's concrete platform an economical solution for commercial use.





*Nga Hau Maiangi, rowing pontoon*

## PADDLE BOAT LAUNCH DOCKS

Human-powered watercraft (HPWC) is the fastest growing segment of the boating industry. That's not surprising given the surge in active outdoor lifestyles.

Marinas around the country are incorporating clever and imaginative dock structures designed to help make ingress and egress of kayaks and other paddle boats safer and easier. They can be specially configured to assist the disabled to go from wheelchair to kayak on their own.

Even the narrow, shallow strip of water between the parking lot and the first mainwalk can become Kayak Boulevard.

Incorporating facilities for dinghies and human-powered watercraft offers a number of advantages. The increase in marina visitors helps support restaurants and stores. Affordable paddle sports and sailing schools attract young people into boating and assures the future of our industry.



*Low freeboard, concrete dock, decked in lpe*



*Wheelchair accessible kayak launch*





*Fixed access pier and cabana, private marina in the Bahamas.*

## FIXED PIER STRUCTURES

Common applications of fixed pier construction include Travel-lift piers, approach piers that provide access onto the docks, and boardwalks along the water's edge. These fixed structures tie into the landside and extend out over the water.



*Travel-lift pier with timber service docks, Channel Islands Boatyard*





## LANDSIDE INFRASTRUCTURE

There are a number of upland components used to tie the water and landside together. Paved walkways lined with railings are common in waterfront resorts, parks and other waterside properties. Gates provide secure access onto the docks.

Drystacks provide a convenient way to store boats on landside property.





*Orams Drystack, New Zealand*

## DRYSTACKS - DRY BOAT STORAGE

A growing demand for larger wet slips and limited in-water space led to the emergence of the drystack. Designed as an enclosed building or open rack structure, drystacks provide upland storage for boats typically up to 60 ft. Racks can also be built for the storage of boat trailers.

Bellingham Marine's drystack, known as the Unistack, can be customized to meet any owner requirement. Racks are engineered to be easily reconfigured for boats of varying sizes.

Unistack is designed as a "rack supported" structure. For enclosed drystacks, this type of design creates efficiencies by utilizing the boat storage racks as the building's structural framing.



*Unistack drystorage, Brooks Bridge Marina*







*Metal railing and security gate, Harbor at Marina Bay*

## RAILINGS, GATES & GANGWAYS

Railings, gates and gangways are a necessary component of most marinas. They provide safety, security and access. More than their functional purpose, these components often set a visitor's first impression and offer an opportunity for personalization of the property.

Lighting, material choice, color and design can be used to create a memorable impression. Gates and railings can be mounted on the landside or placed on the docks. Some facilities may use a combination of the two.



*Glass security gate, Docklands Megayacht Marina*





## DESIGN AND CONSTRUCTION

The design and construction of over water infrastructure is complex. Permitting and regulatory requirements are often difficult to navigate.

The dynamic nature of the environment and intricacies of the interconnected systems often compound the complexity of these kinds of projects.





## Save With Design/Build Single Source

A design/build approach to marina construction is often the best approach for owners looking to reduce project costs.

The process involves a single entity who accepts full responsibility for designing and constructing a project from conception to completion. The more experience a single-source firm has in all required disciplines (design, manufacture, and construction) the more value they are able to create for clients. Understanding the interconnectivity of each element is crucial.

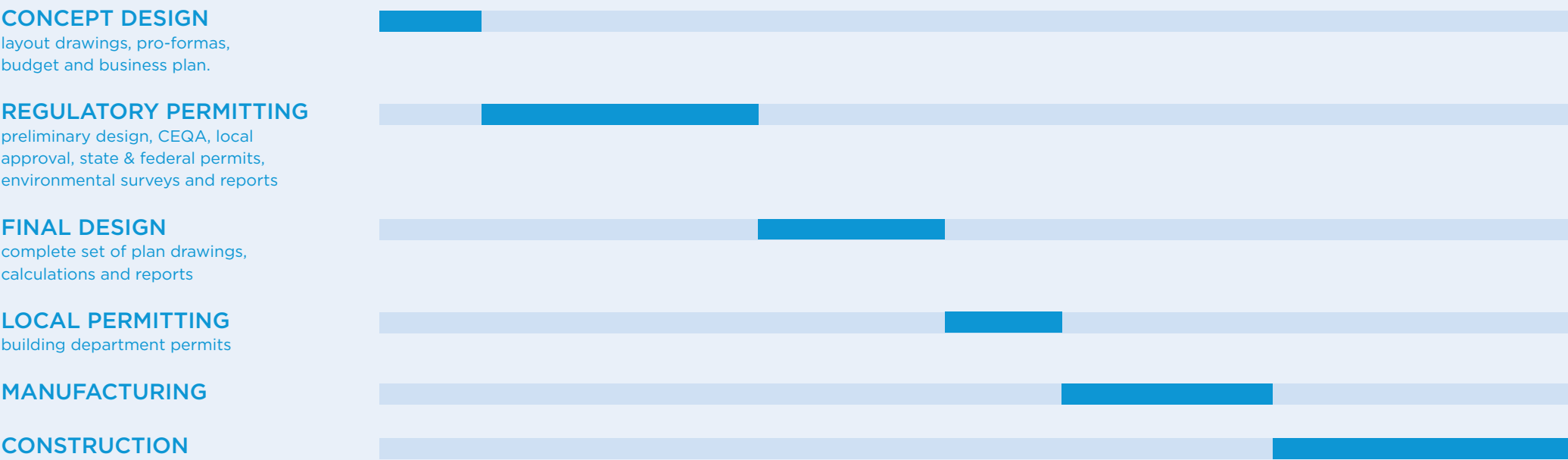
Collaboration is the foundation of design/build. From the outset of the project, design, manufacture and construction expertise is brought to bear upon all components. Constructability and operating expenses are evaluated against initial costs to optimize lifecycle costs.

Clients who team up with Bellingham Marine enjoy the company's vast international network of intellectual resources. Clients receive full access to the industry's top engineers, construction managers, manufacturers and consultants.

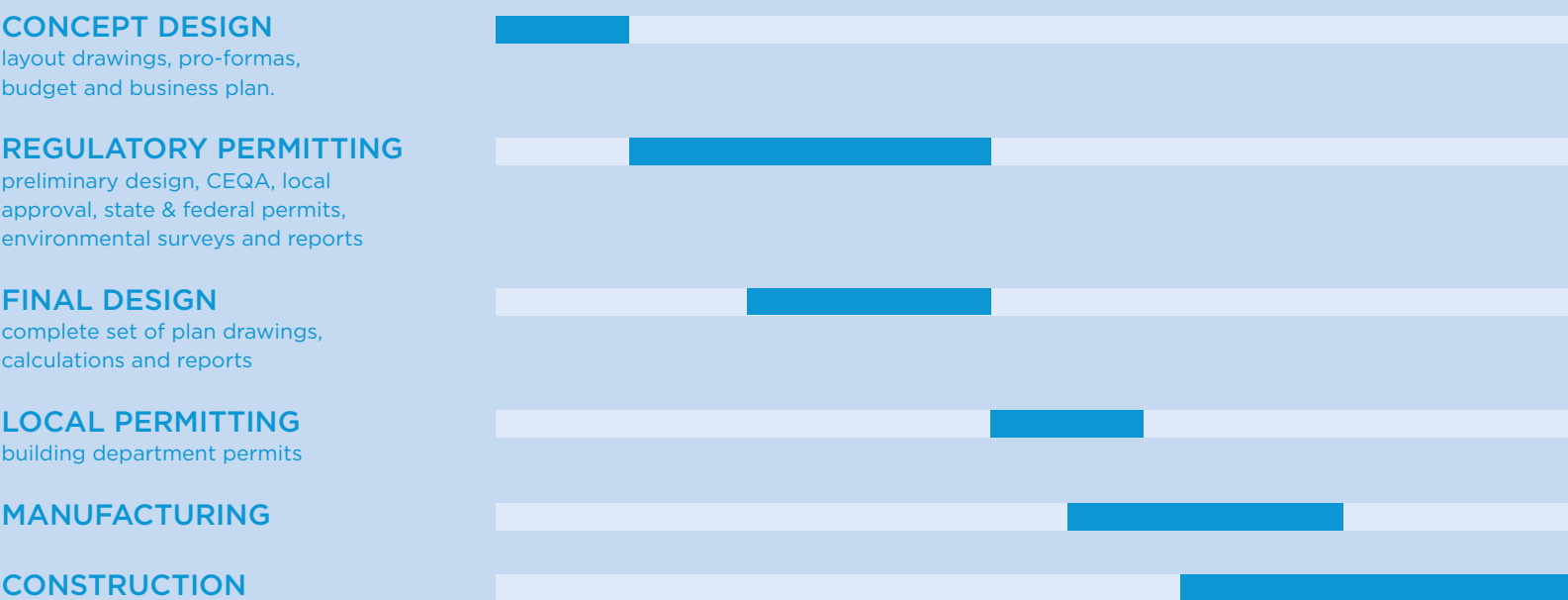
Design possibilities, optional amenities and construction suggestions gained from building thousands of marinas in over a dozen countries are shared with clients through Bellingham's extensive library of resources.



# Traditional Design/Build Approach



# Fast-Track, Single-Source Approach



# Fast-Track, Turn-Key

Bellingham Marine has spent the last 60 years honing its design/build approach. Fully integrated services, a deep knowledge base and a strong network of the industry's best professionals, are key to the success of Bellingham's fast-track process.

Benefits of Bellingham's design/build model:

- Initial soft costs are lower due to streamlined processes.
- Individual components are optimized creating efficiency and economic value.
- Overall project completion time is reduced by overlapping key phases.
- Installation cost and schedule are further reduced through use of a cross-trained workforce
- Overall risk to the owner is minimized when Bellingham manages the entire process.

Expertise in dock design, permitting, project management, maintenance and retrofitting enable Bellingham Marine to provide owners with a full range of services from design/build construction to product supply.



Rounded finger modules, Alamitos Bay Marina





## WATERFRONT RESORTS & HOTELS

A marina is an effective use of resources for any waterfront resort. The marina operates independent of the hotel's guest volume and generates a steady revenue stream from slip rentals.





## Blue Haven Resort & Marina

Tucked away in the flawless waters of the Turks and Caicos, the Blue Haven Resort and Marina is rated as one of the top 20 resorts in the Caribbean.

Occupying an idyllic private beach, the resort marina is framed by hammocks swaying among palm trees. Along with enjoying excellent services and amenities, boaters at Blue Haven have direct access to some of the world's best cruising grounds.

### LOCATION

Turks and Caicos

### SLIP MIX

96 slips, 25 ft. – 220 ft.

### PROJECT FEATURES

Unifloat concrete docks  
High speed fuel dock, 65-gallons/min.  
Ionized, potable water  
In-slip sewer pumpout  
Extra wide finger piers

### PROJECT SCOPE

New marina construction

### SERVICES PROVIDED

Design/build, general contractor  
Installation of docks and accessories







## Bimini Bay Marina

Located 50 nautical miles off Florida's south coast, Bimini Bay Resort is nestled among white sand beaches and stunning turquoise waters. Boaters enjoy incredible big game fishing and some of the world's best diving and snorkeling sites.

Passionate about environmental stewardship, Bimini Bay chose Unifloat concrete docks for the dock's ability to provide increased habitat for marine life and to promote improved water quality.

### LOCATION

North Bimini, Bahamas

### SLIP MIX

136 slips, 40 ft. - 128 ft.  
96 superyacht slips, up to 205 ft.

### PROJECT FEATURES

Unifloat concrete docks  
Floating fuel dock  
In-slip sewer pumpout

### PROJECT SCOPE

New marina construction

### SERVICES PROVIDED

Design/build, general contractor  
Installation of docks and utility services





*Bimini Bay Resort & Marina, Bahamas*







## Marina CostaBaja

Located on the Sea of Cortez in beautiful La Paz, CostaBaja Resort and Marina is a 550-acre master planned development. The resort includes a nautical club, hotel, spa, commercial spaces and residential suites.

CostaBaja's marina is held in high regard by captains and crew around the world. First class amenities, five-star service, and access to excellent year round fishing puts Marina CostaBaja at the top of cruisers' lists.

**LOCATION**  
La Paz, Baja California Sur, Mexico

**SLIP MIX**  
250 slips, 30 ft. – 220 ft.

**PROJECT FEATURES**  
Unifloat concrete docks  
In-slip pumpout  
Superyacht moorage  
Double basin layout

**PROJECT SCOPE**  
New marina construction  
Creation of a new harbor

**SERVICES PROVIDED**  
Design/build, prime contractor  
Installation of docks and accessories







## Ko Olina Resort & Marina

On the leeward coast of Oahu, you will find Ko Olina, the only deep-draft marina in Hawaii. A picturesque tropical paradise with miles of pristine shoreline and lush tropical gardens.

Add in seven crystal clear lagoons fronting the ocean side of the property, 1.5 miles of sandy beach and stunning views of the Waianae Mountains and you will understand why the resort is called Ko Olina, Hawaiian for Place of Joy.

### LOCATION

Honolulu, Hawaii, USA

### SLIP MIX

330 slips, 30 ft. – 150 ft.  
Side-tie moorage up to 200 ft.

### PROJECT FEATURES

Unifloat concrete docks  
Floating fuel dock  
Custom railings and gates

### PROJECT SCOPE

New marina construction

### SERVICES PROVIDED

Design/build, general contractor  
Installation of docks and accessories







## Yas Marina

An exquisite example of luxurious design, Yas Marina provides boaters with an experience found nowhere else in the world. Built inside a Formula One Race Track, come race night, there is not a bad seat in the house.

Renowned for being one of the best superyacht marinas in the world, Yas Marina offers a memorable experience for anyone privileged to visit this world-class property.

### LOCATION

Abu Dhabi, UAE

### SLIP MIX

143 slips, 15m – 66m

Side-tie moorage up to 100m

### PROJECT FEATURES

Provisioned to handle increased capacity during special events

Rope lighting on pontoons

Custom gangways with recessed deck lighting

In-slip sewer pumpout

Marina built in the dry

### PROJECT SCOPE

New marina construction

### SERVICES PROVIDED

Design/build, general contractor

Installation of docks and utilities









## Bridge Pointe Hotel & Marina

Located in North Carolina's second oldest city, New Bern, the Bridge Pointe Hotel and Marina offers the perfect balance of small town charm and exciting adventure.

Marina tenants can take advantage of the hotel's concierge services and amenities or enjoy a day golfing or even go canoeing in the Croatan National Forest.

### LOCATION

New Bern, North Carolina, USA

### SLIP MIX

125 slips, 33 ft. – 70 ft.  
Side-tide moorage up to 150 ft.

### PROJECT FEATURES

Timber dock with hardwood decking  
Deep water basin

### PROJECT SCOPE

Replacement of existing marina  
Upgraded utilities

### SERVICES PROVIDED

Design/supply







## Wyndham Harbour

Wyndham Harbour is the perfect retreat from city life. Located just 30 minutes outside of Melbourne, the new residential and marina development embodies the modern recreational lifestyle.

Beaches, trails and water access for boaters as well as swimmers are available for residents right outside their door. Once complete, Wyndham Harbour Marina will have 1,000 wet berths, drystack storage for more than 350 boats, and a high-speed fuel dock.

### LOCATION

Werribee, Victoria, Australia

### SLIP MIX

150 berths, 10m – 20m

### PROJECT FEATURES

Unifloat concrete docks  
Individual metered power & water  
FRP thru-rods  
In-slip sewage pumpout

### PROJECT SCOPE

New marina construction

### SERVICES PROVIDED

Design/build, general contractor  
Installation of docks and accessories





# URBAN MARINA PROPERTIES

Watersports are an important and growing economic factor for waterfront cities. Urban marinas can harness the economic benefit of this population by creating special use areas that cater to recreational tourists and non-traditional boaters. Paddle craft launch docks are increasing in popularity and invite the community into your marina.





## Alamos Bay Marina

The Long Beach Marinas, which include Alamos Bay and the Downtown Marinas, are the largest singly run marina system west of Chicago.

Protected by a series of offshore breakwaters and a natural bay, boaters enjoy easy access to open water, prevailing winds and close proximity to Catalina Island.

### LOCATION

Long Beach, California, USA

### SLIP MIX

1,967 slips, 15 ft. – 115 ft.

### PROJECT FEATURES

Unifloat concrete docks  
Hardwood trim  
Rounded finger ends  
Floating platforms  
Varied freeboards  
Davit cranes

### PROJECT SCOPE

Replacement of existing marina  
Utility upgrades  
Dredging  
Parking lot improvements  
Restroom construction

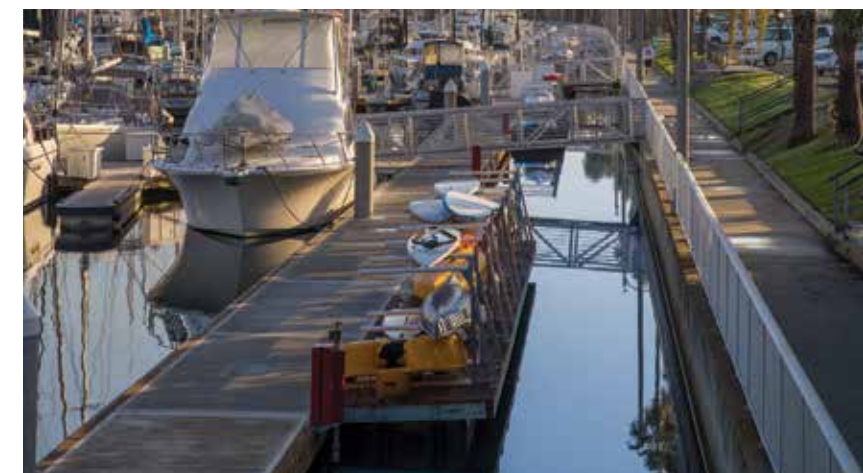
### SERVICES PROVIDED

Permitting support  
Design/build, general contractor  
Installation of docks and utilities  
Landside improvements  
Seawall repair work





*Alamitos Bay Marina, California*





## The Yards Marina

The Yards is a \$2 billion development that includes 25 buildings on 48 acres, a waterfront park, and mixed-use marina.

The waterfront in the Yards district of Washington, D.C. is humming with life. Water taxis take people to work and play. Paddleboards and kayaks explore the river and transient boaters tie-up at the day use dock to take in a baseball game at Nationals Park Stadium or to grab a quick bite.

**LOCATION**  
Washington, D.C., USA

**SLIP MIX**  
51 slips, 40 ft. – 60 ft.  
Side-tie up to 120 ft.

**PROJECT FEATURES**  
Unifloat concrete docks  
Paddle craft launch dock  
Seaflex anchoring  
6,601 sq. ft. floating platform with dual freeboard  
Water taxi and charter vessel dock  
Fixed access piers

**PROJECT SCOPE**  
New marina construction

**SERVICES PROVIDED**  
Design/build, general contractor  
Installation of docks and utilities







## Fort Pierce City Marina

Fort Pierce City Marina was hit by a devastating hurricane in 2004, requiring a complete marina rebuild.

To prevent such an occurrence again, 13 barrier islands were erected to provide critical storm protection to the marina alongside the floating wave attenuator. The islands provide a sanctuary to juvenile fish. Mangroves were planted around the islands to attract birds, oyster larvae, fish and other marine life.

**LOCATION**  
Fort Pierce, Florida, USA

**SLIP MIX**  
137 slips, 40 ft. – 140 ft.

**PROJECT FEATURES**  
Unifloat concrete docks  
Floating wave attenuator  
Barrier islands for storm protection

**PROJECT SCOPE**  
Replacement of storm damaged marina

**SERVICES PROVIDED**  
Design/build, general contractor  
Gangway supply and installation  
Installation of docks and utilities







## Sacramento City Marina

Sacramento City Marina is a municipal marina, comprised of north and south basins. The marina serves a vibrant boating region that includes the Delta and recreational waterways from San Francisco Bay north to a thousand miles of accessible waterways.

The two basins are cut into the shoreline by a channel. Between the river and the marina is a tranquil park that enhances the environment of the marina.

Given Sacramento's extreme summer temperatures, shade is essential to maintaining docked boats, which is why the marina wanted all its docks to be covered.

### LOCATION

Sacramento, California, USA

### SLIP MIX

191 slips, 30 ft. – 50 ft.

### PROJECT FEATURES

- Covered Unifloat concrete docks
- Match-cast floating platform with stamped deck
- Floating marina store
- Fuel dock
- ADA access at all water heights
- Zinc coated steel pile, painted concrete gray

### PROJECT SCOPE

- Replacement of existing docks in south basin
- Retrofitting of 2 docks in north basin to include roofs

### SERVICES PROVIDED

- Design/build, general contractor
- Utility design
- Pile design
- Roof design







## The Wharf

Among a number of ongoing urban waterfront revitalization projects, The Wharf in Washington, D.C. is the largest in the US and arguably the most comprehensive.

The \$2.2 billion project encompasses 50 acres of water and 24 acres of upland improvements. It will feature three million square feet of new residential, office, hotel, retail, cultural, and public space. The water side will include waterfront parks, promenades, piers, docks, and three new marina facilities.

### LOCATION

Washington, D.C., USA

### PROJECT FEATURES

Market Pier (30 slips + 1,230 ft. of side-tie)

Transit Pier (900 ft. of side-tie)

Capital Yacht Club (100 slips)

Recreation Pier (150 ft. of low freeboard dock for paddle craft)

Wharf Marina (200 slips + 2,520 ft. of side-tie)

East Potomac Park Hop Dock (140 ft. of side-tie)

### PROJECT SCOPE

Replacement of existing marinas and piers

### SERVICES PROVIDED

Design/build, general contractor

Installation of docks and utilities





*The Wharf, Washington, D.C.*





## Marina at Keppel Cove

A short boat ride from the lavish region of Macau, Keppel Cove is the ultimate in luxury living. The waterfront development features a full-service marina, yacht club, boutique hotel, event facilities, restaurants, and a high-end residential development.

An intricate system of bridges, roadways and canals lined with lavish modern homes creates a beautiful backdrop for Keppel Cove. Once complete, this waterfront development will have 250 waterfront villas, each with a private dock, and a state-of-the-art 158-berth marina.

**LOCATION**  
Zhongshan City, Guangdong Province, China

**SLIP MIX**  
80 berths, 12m — 24m  
42 residential docks

**PROJECT FEATURES**  
Unifloat concrete docks  
Floating fuel dock  
In-slip sewage pumpout  
Residential docks

**PROJECT SCOPE**  
New marina construction

**SERVICES PROVIDED**  
Design/build contractor







## Stockton Marina

This state-of-the-art marina located along the Stockton Channel in Northern California offers modern yacht moorage for permanent and visiting boaters. A promenade provides a natural link between the marina and nearby public destinations including a sports arena and ballpark.

A transient dock on the south side of the basin provides direct access to shopping, local parks, an outdoor amphitheater and numerous other attractions.

**LOCATION**  
Stockton, California, USA

**SLIP MIX**  
48 slips, 50 ft. – 80 ft.  
1,400 ft. of side-tie moorage

**PROJECT FEATURES**  
Unifloat concrete docks  
Custom canopy roof structure  
Architectural piling

**PROJECT SCOPE**  
Replacement of existing marina

**SERVICES PROVIDED**  
Design/supply  
Piling design



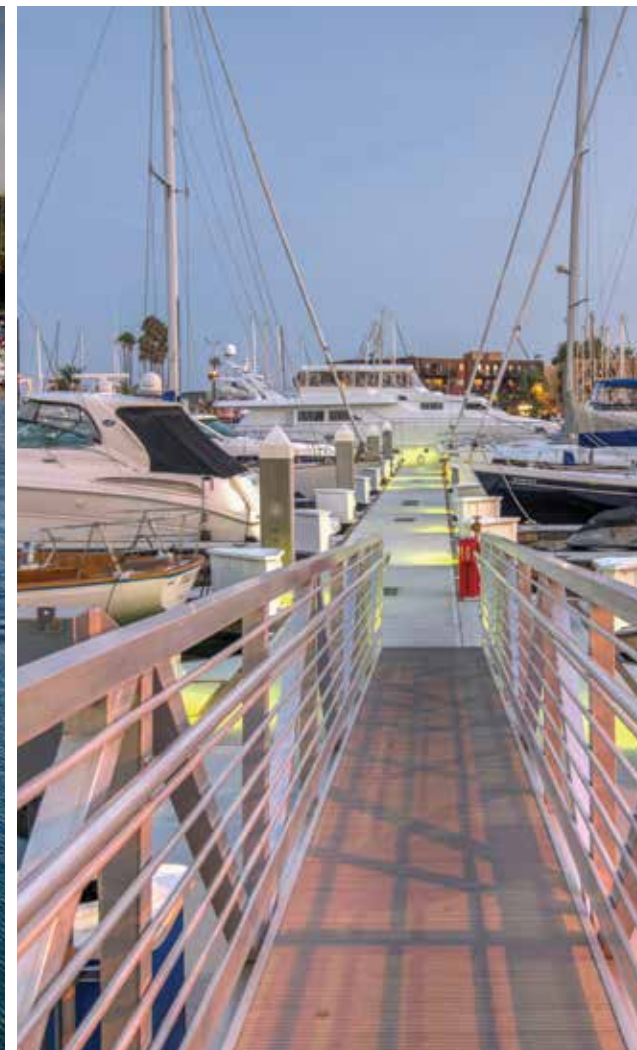




Stockton Marina, California







## Marina at Marina City Club

Nestled among Marina del Rey's most prestigious properties, the Marina at Marina City Club is an excellent example of a modern, West Coast harbor. The marina is located within a short drive of some of LA's most popular tourist spots including world-famous Venice Beach and Santa Monica.

### LOCATION

Marina del Rey, California, USA

### SLIP MIX

302 slips, 25 ft. - 115 ft.

### PROJECT FEATURES

- Unifloat concrete docks
- Glass security gates
- Covered gangway
- Charter vessel dock

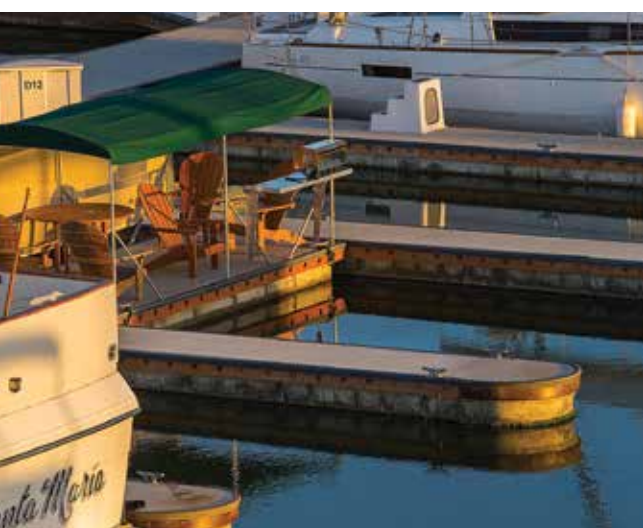
### PROJECT SCOPE

- Replacement of existing marina
- New railings, gates & gangways
- Utility improvements

### SERVICES PROVIDED

- Permitting support
- Design/build, general contractor
- Installation of docks and utilities





## Westpoint Harbor

Westpoint is equal parts water and land, with shore-side amenities that support a full service marina. The harbor is a maritime resort for boaters, with extensive facilities to support recreational boating from stand-up paddleboards, kayaks and kiteboards to superyachts.

Purpose built with the boater's experience in mind, Westpoint pioneered many of the features common in today's modern marinas.

### LOCATION

Redwood City, California, USA

### SLIP MIX

401 slips, 36 ft. - 100 ft.

### PROJECT FEATURES

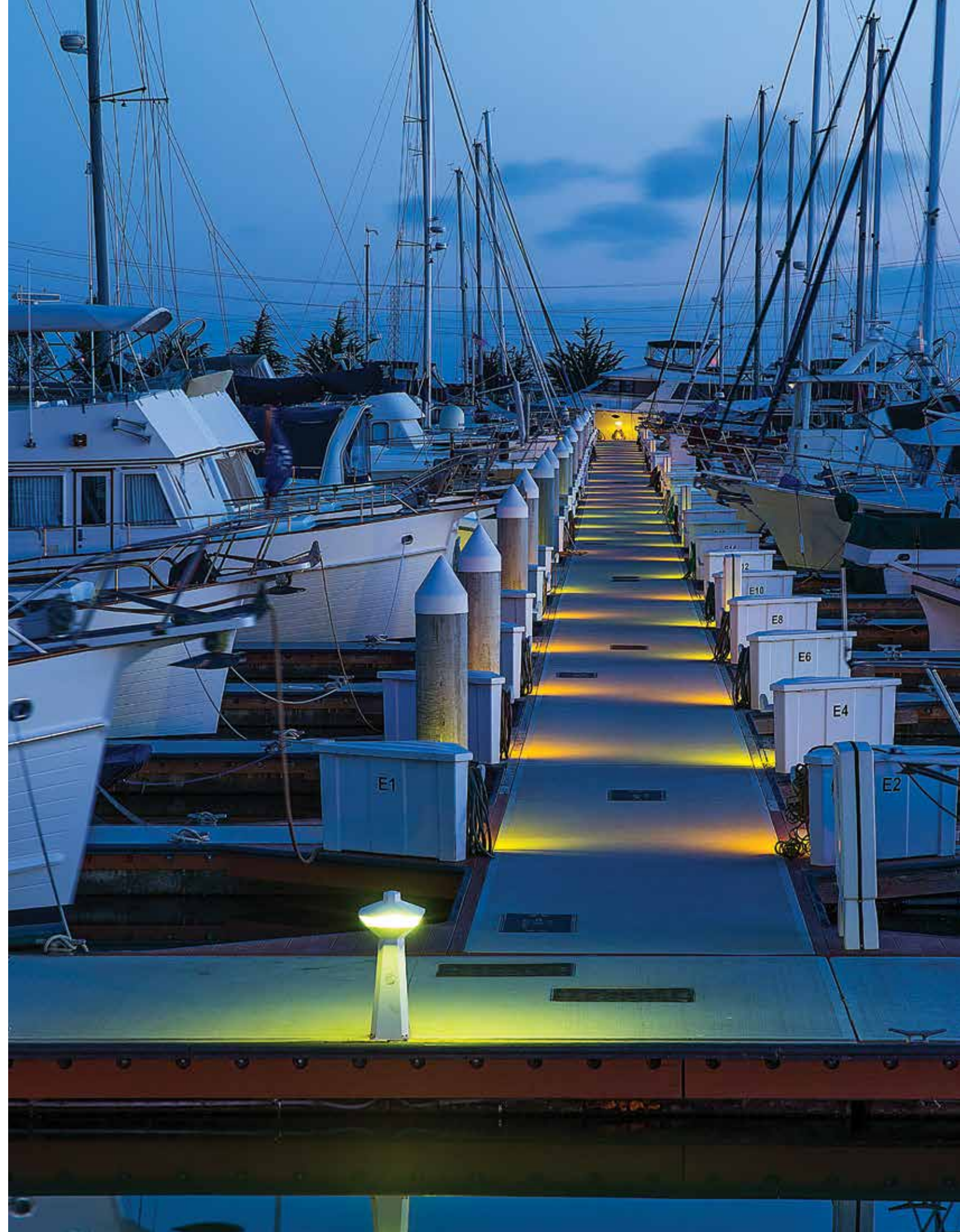
Unifloat concrete docks  
Ipe hardwood trim  
Rounded finger ends  
Custom gates and gangways

### PROJECT SCOPE

New marina construction

### SERVICES PROVIDED

Design/build, general contractor  
Installation of docks and utilities





## Rose Bay & Point Piper

Located adjacent to each other, Rose Bay and Point Piper Marinas are a dramatic departure from the ordinary marina. The Unifloat concrete pontoons have a raven colored additive that gives the docks a charcoal appearance.

To maintain an unobstructed view, many of the pilings are a telescoping design and remain hidden beneath the deck at all times. Personalized polished aluminum-alloy cleats and black power pedestals with silver in-fill panels give the marina a look of sophistication.

**LOCATION**  
Sydney, NSW, Australia

**SLIP MIX**  
83 slips, 10m – 30m

**PROJECT FEATURES**  
Unifloat concrete pontoons  
Colored concrete  
Telescoping pile  
Stainless steel mega-bollards  
Stainless imprinted junction box lids  
Aluminum alloy cleats

**PROJECT SCOPE**  
New marina construction

**SERVICES PROVIDED**  
Design/build, general contractor  
Installation of docks and accessories







## Cap Sante Boat Haven

Situated in the heart of Anacortes, Washington, Cap Sante Boat Haven is truly a haven for boaters.

Anacortes is one of the boating capitals of the PNW, and Cap Sante does not disappoint. The marina caters to the commercial fishing fleet as well as recreational boaters that traverse the waters of Fidalgo Bay.

### LOCATION

Anacortes, Washington, USA

### SLIP MIX

262 slips, 40 ft. - 113 ft.

### PROJECT FEATURES

- Unibolt concrete docks
- Rounded finger ends
- Fuel float
- Two match-cast, post tensioned platforms
- Pumpout facilities

### PROJECT SCOPE

- Replacement of existing docks
- Utility improvements

### SERVICES PROVIDED

- Design/supply
- Supervision of dock installation





## Marina del Rey Marina

Located in front of the recently renovated historic Marina del Rey Hotel, Marina del Rey Marina is in the heart of Marina del Rey.

A trendsetter within the industry, Marina del Rey Marina is the first U.S. marina to be outfitted completely with fiber reinforced polymer (FRP) walers and thru-rods. The marina's innovative FRP components require minimal maintenance, have a long service life and will not rust or decay.

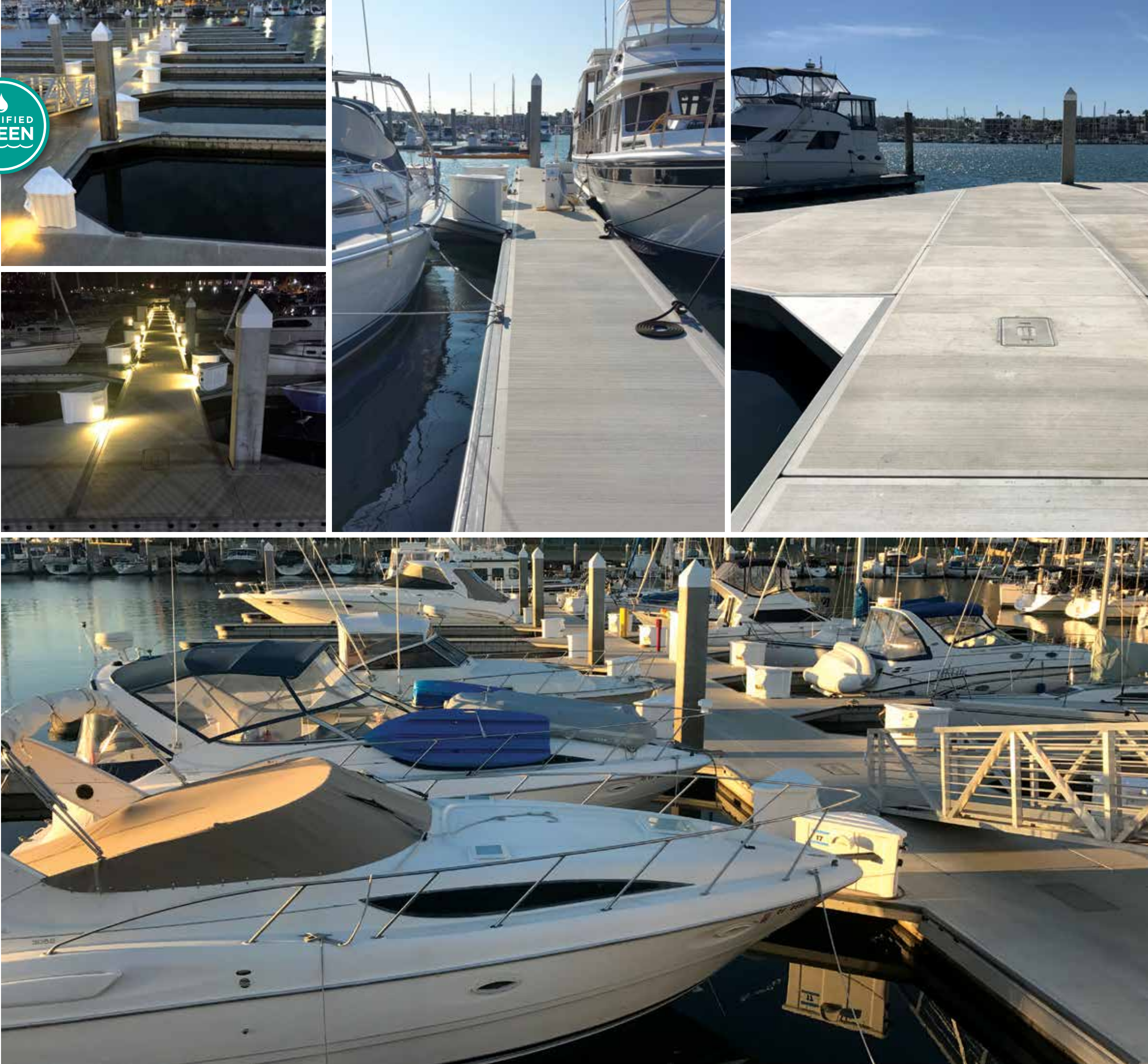
**LOCATION**  
Marina del Rey, California, USA

**SLIP MIX**  
277 slips, 35 ft. - 65 ft.

**PROJECT FEATURES**  
Unifloat concrete docks  
FRP walers  
FRP thru-rods  
Concrete imprinted junction box lids

**PROJECT SCOPE**  
Replacement of existing marina  
New gates and gangways  
Utility upgrades

**SERVICES PROVIDED**  
Permitting services  
Design/build, general contractor  
Installation of docks and utilities







## SUPERYACHT FACILITIES

Over the past several decades there has been an increased demand for superyacht berths all over the world. Superyachts require a huge power output, heavy duty docks, and a variety of other unique dockside amenities.





## Yacht Club Costa Smeralda

In the beautiful, pristine waters of the Caribbean in a natural deep-water basin, Yacht Club Costa Smeralda provides moorage for large vessels requiring deep water. Roman clay colored concrete floats, LED lights cast into the float decks, and underwater lighting convey the sense of ultra-luxury for which the marina is known.

With unrivaled fishing, scuba diving, snorkeling and a wealth of islands to explore, YCCS is perfectly located for yachts cruising the British Virgin Islands.

### LOCATION

Virgin Gorda, British Virgin Islands

### SLIP MIX

38 slips, up to 88m

### PROJECT FEATURES

Unifloat concrete docks  
Roman clay colored floats  
Flexible mooring configuration for special events  
Underwater lighting  
Stainless steel bollards

### PROJECT SCOPE

New marina construction

### SERVICES PROVIDED

Design/build, general contractor  
Installation of docks and utilities



## Marina di Loano

Marina di Loano offers an experience that appeals to people from all countries. The marina has been developed to attract people who love the sea and enjoy sports. In keeping with the “destination within a destination” theme, a spacious beach is part of the 1,000-slip marina. In 2013, the marina added 7 superyacht berths for vessels up to 77m.

The complex has a five-star boutique hotel, restaurants, an upscale sailing club, tennis courts and a golf course ten minutes away.

**LOCATION**  
Loano, Italy

**SLIP MIX**  
7 slips, 55m - 77m

**PROJECT FEATURES**  
Unifloat concrete docks  
Custom gangway  
Bespoke service pedestals  
Superyacht, full-finger berths  
Solar-powered pile cap lighting  
Curved, extra-wide walkway

**PROJECT SCOPE**  
Replacement of small slips with superyacht moorage

**SERVICES PROVIDED**  
Design/supply  
Supervision of dock installation







## Albany Marina

As the most modern superyacht marina in the Caribbean, Albany is the ultimate yachting destination for the rich and famous. Part of a luxury resort community, Albany Marina resides in a man-made, 15-acre deep-water basin in the Bahamas.

A unique feature of Albany Marina is the six activity platforms that provide over water space for slip owners to use for everything from staging areas for provisions to hosting small gatherings.

**LOCATION**  
Providence Point, Bahamas

**SLIP MIX**  
80 slips, 15m – 73m

**PROJECT FEATURES**  
Unifloat concrete docks  
Rounded finger ends  
Composite trim  
Underwater lighting  
Steel pile with HDPE sleeves  
Activity platforms

**PROJECT SCOPE**  
New marina construction

**SERVICES PROVIDED**  
Design/build, general contractor  
Installation of docks and utilities





*Albany Marina, Bahamas*







# Rybovich

Uniquely designed to cater to superyachts, Rybovich offers luxury style service for guests and crew members alike. Service, experience, and ease run through the very core of Rybovich.

The dual-purpose, service center, superyacht marina is a pioneer in the superyacht service industry. The facility has its own fleet of tugboats specially designed for handling superyachts, offers high-speed in-slip fueling for boats up to 150 ft., and provides a comprehensive line of services aimed at the needs of captains and crew.

**LOCATION**  
West Palm Beach, Florida, USA

**SLIP MIX**  
57 slips, up to 390 ft.

**PROJECT FEATURES**  
Unifloat concrete docks  
Floating wave attenuator with skirted floats  
In-slip fueling  
Heavy-duty walkways for scissor lift and golf cart traffic  
Superyacht-capable shore power  
In-slip sewer and bilge tank pumpout

**PROJECT SCOPE**  
Replacement of existing marina

**SERVICES PROVIDED**  
Design/build, general contractor  
Installation of docks and utilities







## Wards Cove on Lake Union

Wards Cove on beautiful Lake Union is a privately owned, 11-slip superyacht marina and 12-home floating neighborhood. Floating home sites feature extra-wide Unifloat walkways and full utilities including power, sewer, water and gas.

The waterfront development is located in the heart of downtown Seattle and offers spectacular views of the downtown skyline.

### LOCATION

Seattle, Washington, USA

### SLIP MIX

11 slips, 95 ft. - 100 ft.  
12 floating home sites

### PROJECT FEATURES

Unifloat concrete docks  
Stamped concrete decking  
200 amp power at slip  
In-slip sewer pumpout  
Filtered, ionized wash-water at slip

### PROJECT SCOPE

New marina construction

### SERVICES PROVIDED

Design/supply  
Supervision of dock installation



## Port Forum

Seldom has a marina offered a more ground-breaking design than Port Forum. The marina was created by the confluence of vigorous civic planning and redevelopment, international diplomacy, and rising demand for moorage, especially for larger vessels.

By far the most visible and exciting part of Port Forum is the superyacht moorage in the outer basin. Visitors can stand on the pedestrian overpass that spans the passage between inner and outer basins and view a solid rank of slips for 33 superyachts with their bows pointing out to sea.

**LOCATION**  
Barcelona, Spain

**SLIP MIX**  
240 slips, 10m – 80m

**PROJECT FEATURES**  
Unifloat concrete docks  
Full-length finger piers for vessels up to 80m  
In-slip sewer pumpout  
Inner and outer basin  
Drystack facility

**PROJECT SCOPE**  
New marina construction

**SERVICES PROVIDED**  
Design/supply  
Supervision of dock installation







## Bahia Mar Yachting Center

The ultimate hotel and marina destination in the heart of Fort Lauderdale, the Bahia Mar Resort and Yachting Center is home to the annual Fort Lauderdale International Boat Show.

A truly unique facility, Bahia Mar seamlessly combines innovation, functionality and beauty to create a marina that promotes public access and the boating lifestyle.

**LOCATION**  
Fort Lauderdale, Florida, USA

**SLIP MIX**  
250 slips, up to 300 ft.

**PROJECT FEATURES**  
Unifloat concrete docks  
Dual use wave attenuator/fuel dock  
Dual purpose facility  
Single and three-phase power at slips over 80 ft.  
Extra-wide walkways for golf cart traffic  
In-slip sewage pumpout

**PROJECT SCOPE**  
Replacement of existing fixed-pier marina

**SERVICES PROVIDED**  
Design/build, general contractor  
Demolition of existing docks  
Installation of docks and accessories





*Bahia Mar, Florida*







## PRIVATE CLUBS & DOCKOMINIUMS

Dockominiums are selling at high premiums, and the purpose of any private club is to create equity and value for its members. A renovation with Unifloat docks has been known to double or triple property values.



# Wrightsville Beach Marina

Set on the Intracoastal Waterway, you will find Wrightsville Beach Marina. A unique beauty with a mix of timber and concrete docks, this marina is the perfect combination of beauty and brawn.

The marina features a heavy-duty outer dock for transient vessels 100 plus feet as well as restaurant dockage. Main walkways and perimeter floats are Unifloat concrete docks. All finger piers and interior marginal walkways are Bellingham Marine's timber dock system.

**LOCATION**  
Wrightsville Beach, North Carolina, USA

**SLIP MIX**  
100 slips, 32 ft. - 80 ft.

**PROJECT FEATURES**  
Unifloat concrete docks  
Bellingham Marine timber docks  
Ipe hardwood decking and accent boards  
Custom railing with recessed LED lighting  
Floating platform

**PROJECT SCOPE**  
Replacement of existing marina

**SERVICES PROVIDED**  
Design/supply contractor  
Float installation  
Supply of handrail and gangway  
Supply of boardwalk decking







## Royal Melbourne Yacht Squadron

Found in the beach town of St. Kilda, a suburb of Melbourne, the Royal Melbourne Yacht Squadron sits in the same place it has for over a century.

The marina, while best known for its yacht races, is also quite popular for its renowned Sailing Academy. Visitors of all ages and experience levels can learn to love the water at this conveniently located marina.

### LOCATION

Melbourne, Victoria, Australia

### SLIP MIX

250 slips, 10m – 23m

### PROJECT FEATURES

Unifloat concrete docks  
140m wave attenuator  
Upgraded utilities and fire suppression system  
M-Tech Sterling & Platinum Pedestals

### PROJECT SCOPE

Expansion of existing marina

### SERVICES PROVIDED

Design/build, general contractor  
Installation of docks and accessories  
Pile driving  
Utility and fire system upgrades





## Ocean Reef Club Marina

Ocean Reef Club is a privately owned marina in sunny Key Largo, the northernmost island of the Florida Keys. Surrounded by tropical scenery and a national marine sanctuary, the island is a mecca for tourists.

Members of the Club own their individual slips, guaranteeing that it is truly a home away from home. With resort style services and accommodations, the Club prides itself as a refuge from the clamor and demands of the world beyond its boundaries.



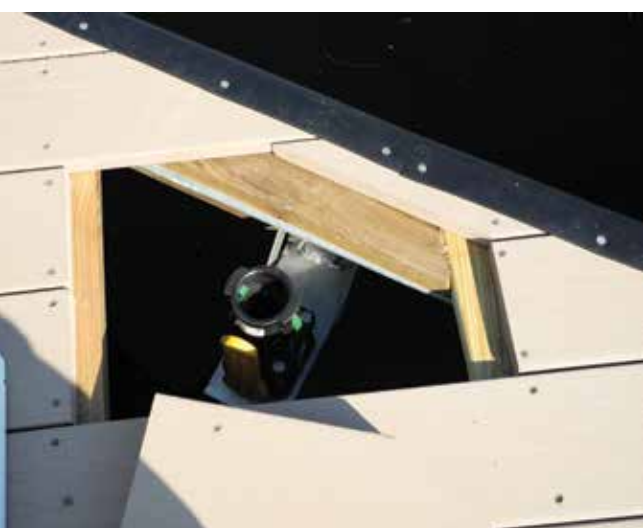
**LOCATION**  
Key Largo, Florida, USA

**SLIP MIX**  
175 slips, up to 175 ft.

**PROJECT FEATURES**  
Unifloat concrete docks  
Composite trim  
Telescoping pile on 80 ft. finger piers  
Dockominium, individual slip ownership

**PROJECT SCOPE**  
Replacement of fixed-pier marina

**SERVICES PROVIDED**  
Design/build, general contractor  
Demolition of existing structures  
Installation of docks and utilities







## Marina at Keppel Bay

On private Keppel Island, the award-winning Marina at Keppel Bay adds to the dramatic beauty of the luxury towers of Reflections at Keppel Bay. The high-end development is truly a waterfront community, with its premium berths and wealth of waterfront amenities and facilities.

The multi-award winning marina was the first marina in Asia to be awarded the 5 Gold Anchors rating from the Marine Industries Association of Australia for excellence in facilities and services.

### LOCATION

Keppel Island, Singapore

### SLIP MIX

168 slips, up to 85m

### PROJECT FEATURES

- Unifloat concrete docks
- Floating wave attenuator
- Fuel dock
- In-slip sewage pumpout
- Large floating platform for events
- Wide walkways for golf cart traffic
- Superyacht berths
- Extra-wide gangway

### PROJECT SCOPE

New marina construction

### SERVICES PROVIDED

Design/build contractor





Marina at Keppel Bay, Singapore







## Royal Sydney Yacht Squadron

The Royal Sydney Yacht Squadron is a private member sailing club on the eastern side of Kirribilli. Established in 1862 by a group of 19 yachtsmen, the club has a rich history amongst Sydney's sailing elite. Its grounds and facilities are equally exclusive.

The primary objective of the Squadron was and remains today to promote and encourage yachting in general, and racing among sailing yachts in particular.

**LOCATION**  
Kirribilli, NSW, Australia

**SLIP MIX**  
Side-tie moorage on attenuator

**PROJECT FEATURES**  
Floating curved wave attenuator  
Telescoping pile

**PROJECT SCOPE**  
Replacement of existing marina infrastructure

**SERVICES PROVIDED**  
Design/build, general contractor  
Installation of docks, piling and utilities







## BOATYARD & HAUL OUT FACILITIES

Planning is key when it comes to building and operating boatyards. There are often upland and on-water spaces. Boatyards also have a heavy environmental burden. A modern, purpose-built facility will include numerous environmental measures to manage run-off and the handling of hazardous materials.





## Port Covington Maritime Center

Port Covington was built with the environment in mind; from the living roofs to the specialized water collection system, this marina was engineered to be green.

Wastewater is collected in specially designed sediment pits. It is then pumped to a wetland where the water is treated naturally before being discharged.

### LOCATION

Baltimore, Maryland, USA

### SLIP MIX

28 slips, 40 ft. – 60 ft.  
Side-tie moorage up to 250 ft.

### PROJECT FEATURES

Unifloat concrete docks  
20 ft. wide wave attenuator

### PROJECT SCOPE

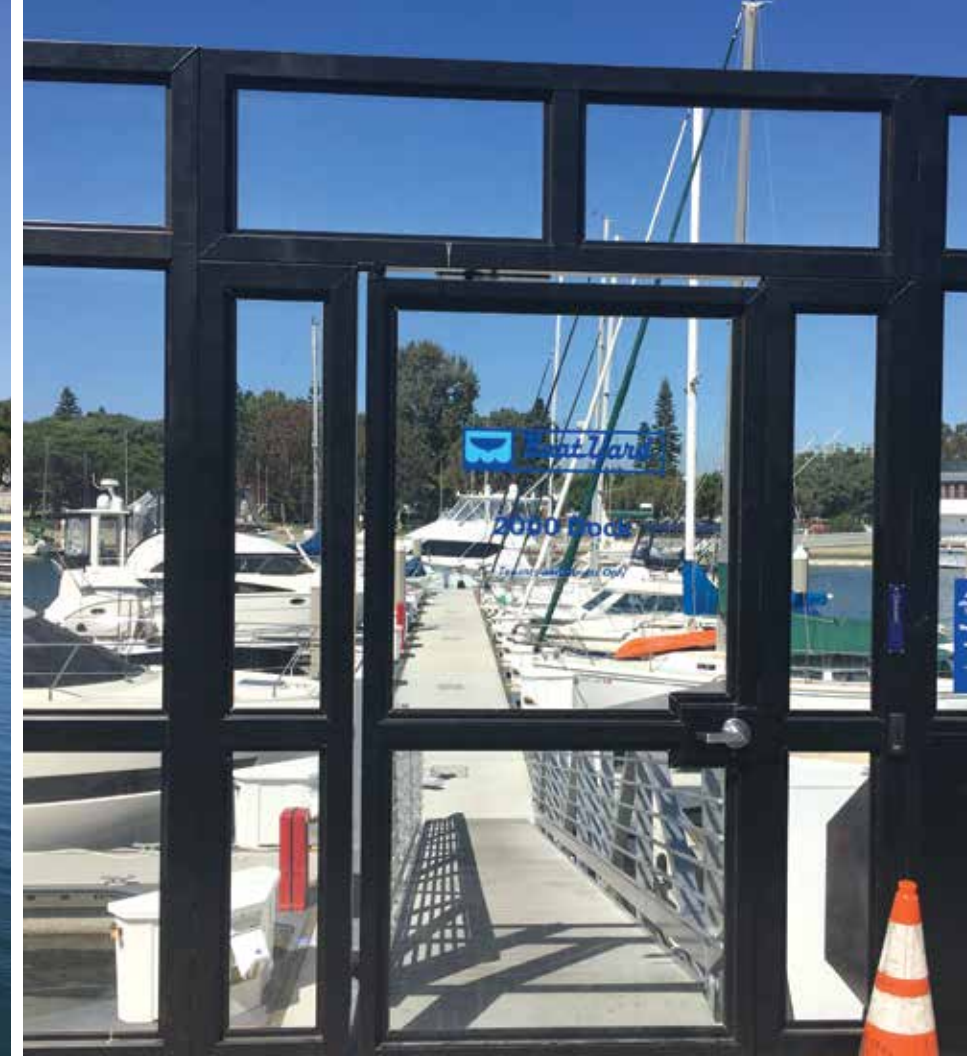
New marina construction

### SERVICES PROVIDED

Design/supply  
Supervision of dock installation







## The Boatyard at Marina del Rey

In beautiful Marina del Rey, you will find the harbor's oldest and most trusted full-service boat repair yard and marina.

The property has private waterfront garage units and storage lockers available for rent, comprehensive repair and maintenance services and a full-service, modern marina. Marina tenants enjoy free haul-out and launch access after one year of tenancy.



**LOCATION**  
Marina del Rey, California, USA

**SLIP MIX**  
114 slips, 20 ft. - 85 ft.

**PROJECT FEATURES**  
Unifloat concrete docks  
Double travel-lift piers

**PROJECT SCOPE**  
Replacement of existing marina  
Replacement of existing travel-lift piers

**SERVICES PROVIDED**  
Design/supply  
Phased dock installation  
Fixed-pier construction



# The Boatyard at Channel Islands

In sunny Oxnard, California, the Channel Islands Landing marina went through a complete renovation including a rebuild of the marina's travel-lift pier and upland infrastructure. All new concrete docks and ADA compliant ramps were a part of the renovation as well.

**LOCATION**  
Oxnard, California, USA

**SLIP MIX**  
157 slips, 25 ft. – 59 ft.  
Side-tie moorage up to 85 ft.

**PROJECT FEATURES**  
Unifloat concrete docks  
Harborside promenade and landscaping  
New restrooms/shower facilities  
Laundry room  
Travel-lift pier and timber service docks

**PROJECT SCOPE**  
Replacement and upgrade of existing infrastructure

**SERVICES PROVIDED**  
Design/build, general contractor  
Demolition of existing structures  
Landside and waterside improvements  
Fixed-pier construction







## FISHING HARBORS

Commercial fishing harbors are often located near open waters and are exposed to harsher climates. This creates the need for strong docks that can stand up to heavy traffic and extreme environmental conditions. Concrete floating docks are proven to be ideal in these situations.





## Whittier Small Boat Harbor

Whittier is a city of 218 people situated at the head of the Passage Canal, gateway to the mesmerizing wilderness of Prince William Sound.

Whittier's Small Boat Harbor serves fishing boats of all shapes and sizes. Built-in fish cleaning stations are situated throughout the marina.

### LOCATION

Whittier, Alaska, USA

### SLIP MIX

150 slips; 24ft. - 52ft.

### PROJECT FEATURES

Unifloat concrete docks

### PROJECT SCOPE

Replacement of existing harbor

### SERVICES PROVIDED

Design/build contractor

Supervision of dock installation





Whittier Small Boat Harbor, Alaska







## St. Paul Small Boat Harbor

St. Paul Island is a small island located in the Bering Sea off the coast of Alaska. The region is known for its rough waters and brutal winters.

The remote location and harsh environment made for a number of unique challenges. All materials had to be pre-fabricated, as there were no local sources. In addition, the entire marina system, including piling, was designed to allow for easy removal. Each winter the marina has to be completely disassembled and stored upland due to severe freezing temperatures.



### LOCATION

St. Paul Island, Alaska, USA

### SLIP MIX

14 slips, up to 40 ft.  
600 ft. of side-tie moorage

### PROJECT FEATURES

Heavy-duty steel docks  
1 ½" thick serrated steel grating  
Gravity anchor system  
Boat launch ramp and staging dock  
Removable docks and piling

### PROJECT SCOPE

New marina construction

### SERVICES PROVIDED

Design/supply  
Supervision of dock installation





# Crescent City Harbor

Crescent City is tsunami central. This charming city near the California Redwoods has suffered eleven tsunamis since 1933. Made wiser by two tsunamis in four and a half years, the harbor decided to do more than just rebuild the old marina.

The pivotal factor in achieving a robust marina is the strength, size and number of pilings. The new steel pilings are 30 inches in diameter, 70 feet long and are socketed approximately 35 feet deep into the rock. The outer dock, known as H-dock, is a wave attenuator designed to calm the harbor on a daily basis. It is also the harbor's first line of defense in the event of a tsunami. The dock and its piling system are designed to survive a wall of water 12 feet tall.

**LOCATION**  
Crescent City, California, USA

**SLIP MIX**  
240 slips, 30 ft. -70 ft.

**PROJECT FEATURES**  
Unibolt concrete docks  
30 inch piles  
Oversized concrete modules  
Floating wave attenuator

**PROJECT SCOPE**  
Replacement of storm damaged marina

**SERVICES PROVIDED**  
Design/supply  
Layout optimization  
Manufacture of oversized pontoons on-site







## COMMERCIAL TERMINALS

Commercial terminals often find that match-cast, post-tensioned concrete products are a perfect choice. These docks and platforms are capable of handling large loads and feel as stable as a fixed pier for ultimate guest comfort.





## Hornblower Cruises

Hornblower Cruises San Diego is a premier cruise and event company with an impressive fleet of vessels. From the Inspiration Hornblower with a capacity for up to 1,000 guests to the Newport Hornblower with a capacity for 150 guests.

Hornblower operates out of two facilities in San Diego, one at the Grape Street Pier and the second at Navy Pier.

**LOCATION**  
San Diego, California, USA

**PROJECT FEATURES**  
Unifloat concrete docks  
ADA access

**PROJECT SCOPE**  
New cruise terminal

**SERVICES PROVIDED**  
Design/build, general contractor  
Installation of docks and utilities  
Pile driving  
Landside improvements







## USS Arizona Memorial

Located in the middle of the Pacific Ocean, 3,000 miles from the West Coast of the U.S., the USS Arizona Memorial is a historic must-see destination for visitors. Each year more than 1.8 million people from around the world come to pay their respects for those who perished that fateful day in 1941.

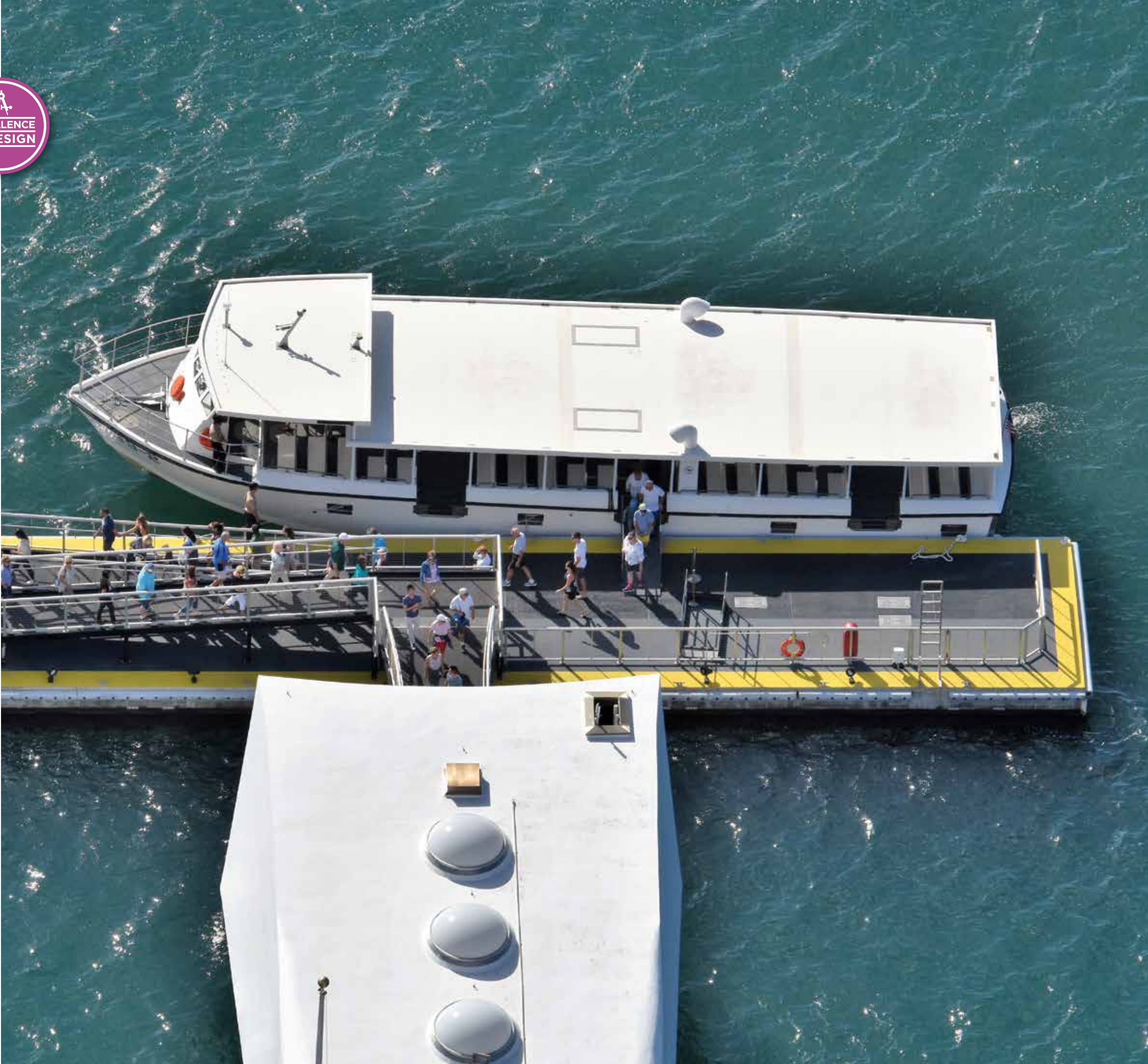
The memorial is built over the remains of the sunken battleship USS Arizona, the final resting place for many of the 1,177-crew members who died during the worst naval disaster in American history.

**LOCATION**  
Honolulu, Hawaii, USA

**PROJECT FEATURES**  
105 ft. long match-cast, post tensioned platform

**PROJECT SCOPE**  
Replacement of damaged ferry landing

**SERVICES PROVIDED**  
Design/supply  
Supervision of platform installation







## Beach Haven Ferry Terminal

Tucked away on the North Shore outside of Auckland, Beach Haven is a highly sought after suburb. A hidden gem boasting bush walks and bird watching, the town is easier than ever to reach with the addition of the Beach Haven Ferry Wharf. The ferry connects residents directly to Auckland and surrounding areas.

### LOCATION

Beach Haven, New Zealand

### PROJECT FEATURES

- Match-cast, post-tensioned platform
- Covered waiting area
- Designed for a maximum wave height of 6 ft.
- Cast-in dual freeboard
- Covered gangways

### PROJECT SCOPE

New commercial terminal construction

### SERVICES PROVIDED

Design/build contractor



## Flagship Cruises

The new Flagship terminal is a clear example of the level of customization that can go into a project. The family owned operation has been serving locals and visitors in San Diego since 1915.

Flagship offers a wide variety of experiences on San Diego's sparkling waters, including nightly gourmet dinner cruises, exhilarating whale watching excursions and thrilling rides on their new jet boat, the Patriot.

**LOCATION**  
San Diego, California, USA

**PROJECT FEATURES**  
Unifloat concrete docks  
Steel walers  
LED rope lighting on covered gangways  
Ocean Guard fenders

**PROJECT SCOPE**  
New commercial terminal construction

**SERVICES PROVIDED**  
Design/build, general contractor  
Permit support  
Installation of docks and utilities







## SPECIAL USE

A collaborative, design/build approach is the best choice for one-off, special use projects. Working as a team, the dock system engineer and client identify performance requirements and possible design solutions. This method results in highly economical and profitable solutions.



# Miami International Boat Show Temporary Docks

The innovation of Bellingham's portable timber dock was born out of the design of a custom dock system developed for use at the Miami Boat Show. The result was a new product for the company and the marina and boating industries – versatile, portable dockage with the look and feel of a custom-built, permanent dock system.

Although there are a number of features that distinguish this timber dock from other lightweight systems available in the marketplace, it's portable nature, owner friendly design, and ability to be arranged in a wide variety of configurations without added components is what sets it apart.

- LOCATION**  
Miami, Florida, USA
- SLIP MIX**  
Flexible configuration, up to 554 slips
- PROJECT FEATURES**  
All docks and piling are removable  
Portable dock system  
One-of-a-kind module connection system  
Concealed lifting eyes  
Quick connect fingers and pile hoops  
Environmentally friendly design
- PROJECT SCOPE**  
New marina construction
- SERVICES PROVIDED**  
Design/supply  
Gangway supply  
Supervision of installation







## Coeur d'Alene Floating Green

The Coeur d'Alene Resort Golf Course provides an unmatched waterfront golf experience. The most memorable challenge – one of the best known in golf – is the famous 14th Hole, The Floating Green, a technological island marvel.

Well-known as one of the most unique and recognizable golf holes in the world, the engineering of the first and only floating, mobile golf green, allows the 22,000-ton island to move along an intricate underwater cable system to varied distances from the tee.

### LOCATION

Coeur d'Alene, Idaho, USA

### PROJECT FEATURES

15,000 sq. ft. floating platform

Finished height of platform, 6 ft. 10 in.

Two 1,200 gallon tanks built into top layer for water collection

### PROJECT SCOPE

New construction

### SERVICES PROVIDED

Design/supply



## 31st Street Marina Floating Pool

The floating pool at the 31st Street Marina in Chicago was designed specifically with winter in mind. When filled, the pool sits flush with the deck of the platform. However, in the winter, when the pool is empty, the aluminum insert is able to free float at its natural level in the water beneath it.

With the two structures designed to float independently, the Harbor is able to fill and drain the pool without affecting the surrounding structures.

- LOCATION**  
Chicago, Illinois, USA
- PROJECT FEATURES**  
Floating platform with pool
- PROJECT SCOPE**  
New construction
- SERVICES PROVIDED**  
Design/supply







## Pelton Round Butte Dam

Portland General Electric built a one-of-a-kind mixing tower and fish passage facility at Round Butte Dam. The 273-foot underwater tower mixes warm water from the top of Lake Billy Chinook with cold water at the bottom. The mixing was designed to help re-establish runs of spring Chinook, Steelhead and Sockeye into the upper Deschutes, Metolius and Crooked Rivers and their many tributaries in Central Oregon.

Bellingham designed two floating platforms for the project; the platforms support a water withdrawal unit and floating fish screen. The bottom platform, which measures 90 ft. by 150 ft., is submerged 20 ft. below the water surface.

### LOCATION

Madras, Oregon, USA

### PROJECT FEATURES

Match-cast, post-tensioned submerged platform  
Advanced lifting design for module handling  
Designed for a 100-year storm event

### PROJECT SCOPE

New construction

### SERVICES PROVIDED

Design/supply



## Port of Long Beach, Pier D

The post-tensioned, match-cast floating platform built for Eagle Rock Aggregates was engineered to withstand and absorb enormous impacts. The advanced berthing system includes two stiff leg, dual-purpose moorings. The legs not only position the carriers for unloading but also provide the infrastructure needed to discharge the vessel's aggregate material to an upland hopper.

The floating concrete platforms, which serve as the foundation for the stiff legs, are approximately 60 ft. in length, weigh over 180,000 pounds, and provide over three ft. of freeboard. Each platform is constructed from three, match-cast, post-tensioned, heavily reinforced modules.

**LOCATION**  
Long Beach, California, USA

**PROJECT FEATURES**  
Match-cast, post-tensioned floating platform  
Moorage for Panamax class bulk carriers

**PROJECT SCOPE**  
New construction

**SERVICES PROVIDED**  
Design/build contractor







## DRYSTACK FACILITIES

Water space is finite, and with large boats taking up wet slips there is a need for an economical way to store boats outside of the water. Drystacks are a perfect alternative method of storing these vessels on upland property.





# Carrabelle Boat Club

Set in one of the most scenic and protected areas of Florida’s coast, the Carrabelle Boat Club is an intimate haven for newcomers and natives alike. Deemed “Florida’s Ultimate Marina Club”, Carrabelle Boat Club is a community all in itself, often referred to as a country club for boaters.

**LOCATION**  
Carrabelle, Florida, USA

**SLIP MIX**  
285 dry racks, 25 ft. – 40 ft.

**PROJECT FEATURES**  
Unifloat staging docks  
Unistack dry storage  
Custom toe-plate

**PROJECT SCOPE**  
New drystack construction

**SERVICES PROVIDED**  
Design/supply, Unistack drystack  
Design/build, Unifloat concrete docks  
Manufacture and supply of gangways







## Tarpon Club Marina

Centrally located in the Isles of Capri, Tarpon Club Marina provides direct boating access to the Gulf of Mexico and its scenic backwaters. The marina offers fully covered and enclosed dry storage, providing boaters with protection from the sun, rain and hurricane force winds. The marina earned recognition as one of the most environmentally friendly facilities as a “Florida Clean Marina.”

**LOCATION**  
Naples, Florida, USA

**SLIP MIX**  
175 dry racks, up to 36 ft.

**PROJECT FEATURES**  
Unistack  
Custom clock tower  
Designed to withstand hurricane force winds

**PROJECT SCOPE**  
New drystack construction

**SERVICES PROVIDED**  
Design/supply





## Bluepoints Marina

Famous for its deep, calm water and well-marked approaches, Port Canaveral is a boater's paradise.

Located in a protected inlet just off the Atlantic Ocean, Bluepoints Marina offers the only fully enclosed dry storage facility with a 150 MPH wind load rating in Central Florida. The building can withstand almost any storm Mother Nature can throw at it.

### LOCATION

Port Canaveral, Florida, USA

### SLIP MIX

498 dry racks, 25 ft. – 40 ft.

### PROJECT FEATURES

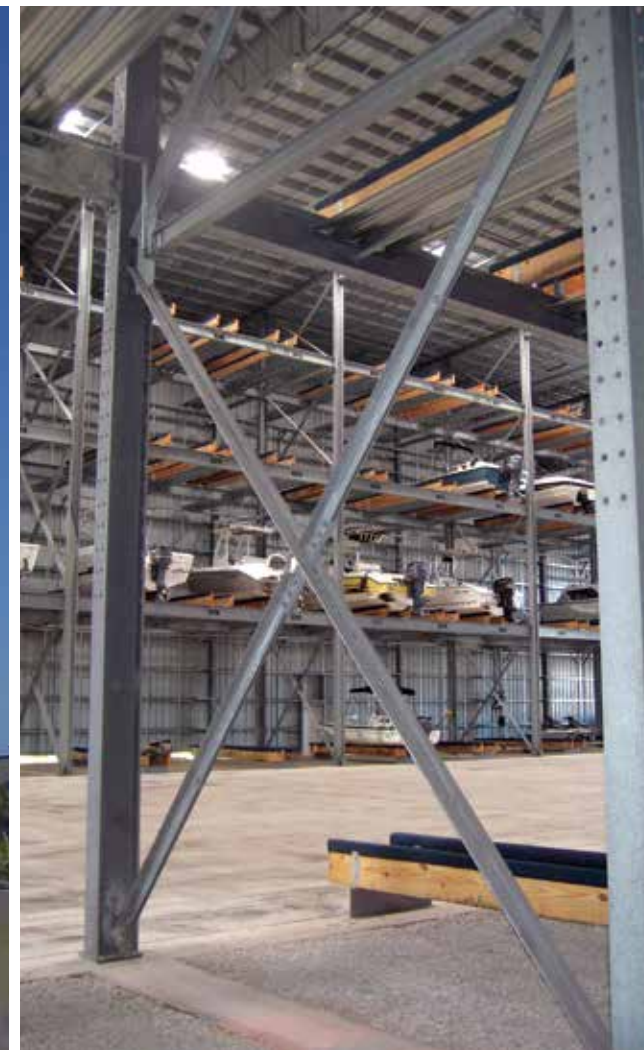
Unistack dry storage  
150 MPH wind load rating

### PROJECT SCOPE

New drystack construction

### SERVICES PROVIDED

Design/supply







## ABOUT BELLINGHAM MARINE

Bellingham Marine specializes in the construction of marinas, wave attenuators and other marine related infrastructure. Every marina is different, and every owner has unique requirements.

We bring our extensive portfolio of products and our widespread expertise to every project we undertake. Driven by a desire to create value for our clients and a commitment to never ending improvement, our clients benefit from our unique approach to dock design and marine construction.



## Creation of Bellingham Marine

## The Bellingham Difference



of marina construction

**350**  
EMPLOYEES  
WORLDWIDE



06

**REGISTERED  
TRADEMARKS  
AND PATENTS**



**OVER  
5,400  
DRYSTACK  
RACKS BUILT**



**22**  
**GLOBAL**  
**OFFICES**



16  
AWARDS

received for excellence in  
design and innovation



**03**  
**MILES**  
OF TEMPORARY  
DOCKS

for the Miami  
International Boat Show



**1972**  
INSTALLED FIRST  
WAVE ATTENUATOR

Sitka, Alaska

**13,500** SQ FT  
FLOATING PLATFORM

submerged 20 feet  
below the water surface



250

## FOOT LONG FINGER PIER BERTHS

for superyachts  
at Marina di Loano



**22,000**  
TON FLOATING GREEN

Coeur d'Alene Resort  
Golf Course

**25**  
**MILLION**  
**SQ FEET**

of floating docks produced





## We Honor Our Commitment by:



## Americas and Western Europe

Phone: +1 360-676-2800

Email: [bmi@bellingham-marine.com](mailto:bmi@bellingham-marine.com)

## Australasia, South Pacific, Middle East and Eastern Europe

Phone: +61 3-9646-6744

Email: [bmi@bellingham-marine.com](mailto:bmi@bellingham-marine.com)





## AWARDS

For more than 60 years, Bellingham Marine has been redefining the marine construction industry through outstanding design, service and innovation. We are proud to design projects that enhance the local community and exceed our customers' expectations.

Bellingham and its projects have been awarded some of the highest honors over the years, receiving recognition at the local, state and national levels. It is a privilege to serve the communities in which we live and work, and we are honored to be regarded as the industry leader.



# LEADERSHIP AND INNOVATION

For more than 60 years, Bellingham Marine has been redefining the marine construction industry through outstanding design, service and innovation. Bellingham Marine and its projects have been awarded some of the industry’s highest honors. Receiving recognition at the local, state and national levels. We are proud to serve the neighborhoods in which we live and work through the design of projects that enhance our local communities.

## Engineering & Design Awards

- 2017 WACA CONCRETE COMMUNITY AWARD (WASHINGTON AGGREGATES AND CONCRETE ASSOC.)**  
USS Arizona Memorial
- 2016 PIANC MARINA EXCELLENCE DESIGN JACK NICHOL AWARD**  
Marina at Keppel Bay
- 2016 ENGINEERING EXCELLENCE HONOR AWARD**  
Crescent City Harbor
- 2014 APWA PROJECT OF THE YEAR**  
The Port of Los Angeles
- 2013 COPRI PROJECT EXCELLENCE AWARD**  
Yacht Club Costa Smeralda Marina
- 2011 GRAND PRIX INTERNATIONAL PUBLIC DESIGN AWARD**  
Marina at Keppel Bay
- 2011 COPRI PROJECT EXCELLENCE AWARD**  
St. Paul Small Boat Harbor
- BEST OF 2010 AWARDS - BEST IN ENGINEERING DESIGN**  
Pelton Round Butte Dam
- 2010 PIANC MARINA EXCELLENCE DESIGN JACK NICHOL AWARD**  
Bahia Mar Yachting Center
- 2009 APWA PROJECT OF THE YEAR**  
San Diego Lifeguard Station
- 2008 WACA EXCELLENCE IN CONCRETE AWARD**  
Salpare Bay Marina

## Awards for Innovation

- 2017 BOATING INDUSTRY TOP PRODUCTS AWARD**  
Miami Int’l Boat Show  
Temporary Floating Docks
- 2016 MIAMI INT’L BOAT SHOW INNOVATION AWARD**  
Miami Int’l Boat Show  
Temporary Floating Docks
- 2016 MRA INNOVATION AWARD**  
Cantilevered Rounded Finger Ends
- 2015 MRA INNOVATION AWARD**  
Unifloat®
- 2013 BEST MARINA INNOVATION BY SUPPLIER**  
Telescoping Pile

## Individual Awards

- 2013 OUTSTANDING INDIVIDUAL CONTRIBUTION TO THE MARINA INDUSTRY**  
John Spragg, General Manager of Bellingham Marine Australia

## Awards for Safety

- 2013 PCI SAFETY AWARD**  
Bellingham Marine NW Division
- 2011 USN RECOGNITION FOR OUTSTANDING SAFETY PERFORMANCE**  
Fiddler’s Cove

Marina of the Year awards are awarded to marinas for exemplary facilities and operations. We are honored to have been a part of the team that built these award winning marinas.

## Marina of the Year Awards

- |   |   |
|---|---|
| <b>2015 MARINA HALL OF FAME</b><br><b>2015 AUSTRALIAN MARINA OF THE YEAR</b><br><b>2013 AUSTRALIAN MARINA OF THE YEAR</b><br><b>2012 AUSTRALIAN MARINA OF THE YEAR</b><br><b>2011 AUSTRALIAN MARINA OF THE YEAR</b><br><b>2007 AUSTRALIAN MARINA OF THE YEAR</b><br>Soldiers Point Marina | <b>2011 AUSTRALIAN HIGHLY COMMENDED CLUB MARINA</b><br>Royal Motor Yacht Club Broken Bay                            |
| <b>2015 INTERNATIONAL MARINA OF THE YEAR</b><br>Port Denarau Marina   | <b>2012 AUSTRALIAN HIGHLY COMMENDED CLUB MARINA</b><br>Royal Prince Alfred Yacht Club                               |
| <b>2015 AUSTRALIAN BEST BOAT YARD</b><br><b>2015 AUSTRALIAN BEST DRYSTACK FACILITY</b><br><b>2012 AUSTRALIAN BEST MARINA BOATYARD</b><br>Gold Coast City Marina   | <b>2010 BEST ARABIAN MARINA OF THE YEAR</b><br>Yas Marina   |
| <b>2015 USA MARINA OF THE YEAR</b><br>Marina Jack   | <b>2011 AUSTRALIAN MARINA OF THE YEAR</b><br><b>2009 AUSTRALIAN MARINA OF THE YEAR</b><br>Empire Marina Bobbin Head |
| <b>2015 BEST MARINA, USA</b><br>Harbour Town Yacht Basin  | <b>2009 ARABIAN YACHT CLUB OF THE YEAR</b><br>Dubai Marina Yacht Club   |
| <b>2014 INTERNATIONAL MARINA OF THE YEAR</b><br><b>2012 INTERPNATIONAL MARINA OF THE YEAR</b><br><b>2010 BEST ASIAN MARINA OF THE YEAR</b><br><b>2008 BEST NEW ASIAN MARINA</b><br>Marina at Keppel Bay   | <b>2008 USA MARINA OF THE YEAR</b><br>Ko Olina Marina   |
| <b>2012 AUSTRALIAN HIGHLY COMMENDED BEST MARINA BOATYARD</b><br><b>2009 AUSTRALIAN MARINA OF THE YEAR</b><br>Fenwicks Marina  | <b>2006 USA MARINA OF THE YEAR</b><br>Edmonds Marina  |
| <b>2012 USA MARINA OF THE YEAR</b><br>Sunrise Marina  | <b>2005 USA MARINA OF THE YEAR</b><br>Charleston City Marina  |
| <b>2012 AUSTRALIAN CLUB MARINA OF THE YEAR</b><br>Sandringham Yacht Club  | <b>2005 AUSTRALIAN MARINA OF THE YEAR</b><br>d’Albora Marinas Nelson Bay  |



Published by Bellingham Marine  
bellingham-marine.com

Copyright © 2017  
All rights reserved. No part of this publication may be reproduced, stored in a retrieval system, or transmitted in any form or by any means, electronic, mechanical, photocopying, recording or otherwise, without written permission of the publisher.

COVER IMAGE: Westpoint Harbor Marina, California

PRINTED IN CANADA



#### WORLDWIDE OFFICES

Auckland, New Zealand  
Belgrade, Serbia  
Bellingham, Washington  
Brisbane, Australia  
Callahan, Florida  
Castle Hayne, North Carolina  
Dixon, California  
Ferndale, Washington  
Fort Lauderdale, Florida  
Jacksonville, Florida  
Kuala Lumpur, Malaysia  
Newport Beach, California  
Port Melbourne, Australia  
Singapore  
Sydney, Australia  
York, Pennsylvania  
Zhongshan, China

#### INTERNATIONAL PARTNERS

Bellingham Harbor Management Co., Japan  
CKIPM Marine Group, Korea  
C.M. Ferrer, Western Europe  
King Leader Bellingham Marine Eng. Svc. Co., Central China  
Marine Structures & Consultancy Limited, Fiji  
Rayomarine, Philippines  
Septech Emirates, Middle East

[bmi@bellingham-marine.com](mailto:bmi@bellingham-marine.com)  
[bellingham-marine.com](http://bellingham-marine.com)

PRINTED IN CANADA

